

Foglight[®]

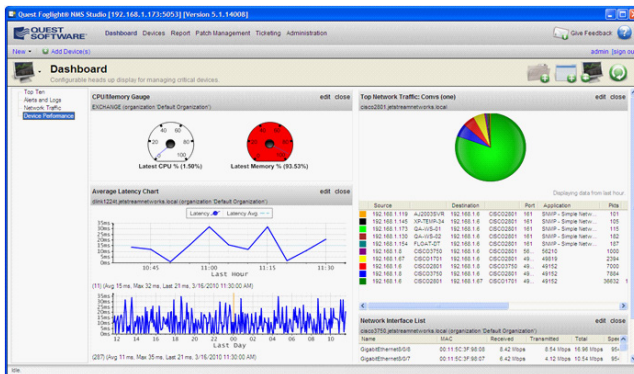
Network Management System

Comprehensive and Cost-Effective Capabilities to Dramatically Improve Performance Across the Most Complex Infrastructures

IT departments find themselves in a tough spot these days: they're under pressure to manage networks thoroughly and efficiently to keep end users productive—but they can't spend a lot of money to do it.

Foglight Network Management System (NMS) is a robust yet affordable solution that IT departments need to deliver the continuity their organizations demand – and do it with a limited budget. Only Foglight NMS can cost-effectively empower IT departments to:

- Reduce the wasted time and chaos associated with sudden network issues
- Mitigate the risk of downtime
- Reduce mean-time-to-resolution of network incidents
- Provide visibility for stakeholders



Foglight NMS allows you to create custom views of key performance indicators.

Installed in less than 15 minutes, Foglight NMS auto-discovers key metrics for network resources, including hardware, operating systems, virtual infrastructure, databases, middleware, applications, and services. Its breadth of powerful capabilities includes:

- **Real-Time performance monitoring** for routers, hubs, switches, servers, and applications
- **Distributed environment support** for a remote network using probes in locations to differentiate performance and boost it ten-fold
- **Traffic analysis** to captures data for any device on the network – including routers, switches, servers, desktops – and instantly identify traffic problems
- **Advanced alerting** for monitoring network events, traffic, and conditions, then establishing a performance baseline to avoid false-positive alerts from normal network activity
- **Network mapping** for a comprehensive, intuitive view of network infrastructure across local and distributed environments
- **Trending and capacity planning:** with out-of-the-box reports based on changes over time for anticipating future resource requirements

HIGHLIGHTS

- Installation and configuration in minutes
- User-friendly interface
- Monitoring of local and remote sites
- Automated remediation
- In-depth performance statistics
- Performance baselining
- Configuration file management
- Syslog and event log analysis

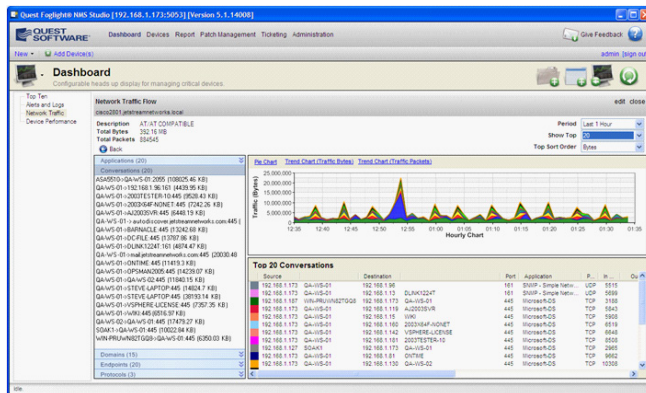
“We have an incredibly complicated network that includes an endless number of devices. Until we implemented Foglight NMS, those devices were difficult to manage. Now it's very easy for me to track and test how much stress is being placed on my network as well as, determine where the choke points are and which devices need to be replaced. What used to take me all day now takes me minutes.”

— Network Engineer at Oracle Corporation

Control Complexity Through a Simple Interface

With Foglight NMS, the root cause of network degradations is easy to pinpoint and diagnose. The solution's unique interface puts IT departments in control of every aspect of their networks. Imagine the toughest problems, and Foglight NMS can solve them.

Problem	How Foglight NMS Solves It
No central location to monitor applications, routers, switches and servers in the network	Customizable dashboard is used to continuously monitor key performance indicators like CPU, traffic, packet loss and event logs. .
Network traffic is slow and you can't identify what issue is causing the problem	Netflow data is captured and presented in reports that quantify exactly how the network is being utilized.
No tracking history of configuration file changes	Configuration files are retrieved as scheduled to detects and show changes.
IT department is not notified immediately of network outages, device failures, performance degradations	E-mail/SMS alert are delivered for all critical problems and escalations can be set for unsolved issues.
Manual, labor-intensive remediation for common problems	Automated corrective actions will restart failed applications and Windows services, as well as reboot servers and execute scripts.
Lack of visibility into remote office networks	Remote agents monitor devices, enforce policies and ensure critical data gets back to Foglight NMS for analysis.



Foglight NMS provides complete visibility into traffic across the network

About Quest Software, Inc.

Now more than ever, organizations need to work smart and improve efficiency. Quest Software creates and supports smart systems management products—helping our customers solve everyday IT challenges faster and easier. Visit www.quest.com for more information.



5 Polaris Way, Aliso Viejo, CA 92656 | PHONE 800.306.9329 | WEB www.quest.com | E-MAIL sales@quest.com
 If you are located outside North America, you can find your local office information on our Web site.

© 2010 Quest Software, Inc.
 ALL RIGHTS RESERVED

Quest Software and Foglight are registered trademarks of Quest Software, Inc. in the U.S.A. and/or other countries. All other trademarks and registered trademarks are property of their respective owners.
 DSA-Foglight-NMS-2-US-AG-20100323

Features

- Alerts and notifications
- Application monitoring
- Automated remediation
- Cloud monitoring
- Cross platform support
- Go live monitoring
- Web Browser Interface
- Wireless monitoring
- Help desk monitoring
- Load-and-go deployment
- Log file management
- Mobile device support
- Monitoring dashboards
- Network traffic flow monitoring
- Performance baselining
- VoIP – IP SLA monitoring
- pt360 tool integration
- Remote office support
- Reporting
- Role-based access
- Router config backup
- Smart policies
- SNMP enablement
- Virtualization support

Supported Technologies

- SNMP V1, V2c, V3
- WMI application monitoring
- NetFlow, sFlow, J-Flow
- Support for 32 and 64 bit
- Windows, Linux, Mac agents
- LANs, WANs, wireless LANs, routers, switches, ATM, frame relay4

Modules

- Traffic analysis
- VoIP – IP SLA monitoring
- Distributed agents

Expand Foglight NMS to collect network traffic, monitor VoIP infrastructures, and efficiently monitor remote sites.

System Requirements

- CPU speed: 3.0 GHz
- Hard drive Space: 20GB
- Memory: 3 GB
- Operating system: Windows 2003 SP1 or 2008 Server (32-bit or 64-bit)
- Database: bundled CE, SQL Server 2005 or 2008 (Standard or Enterprise); .NET 2.0 or higher